



## Redcam design software install instruction

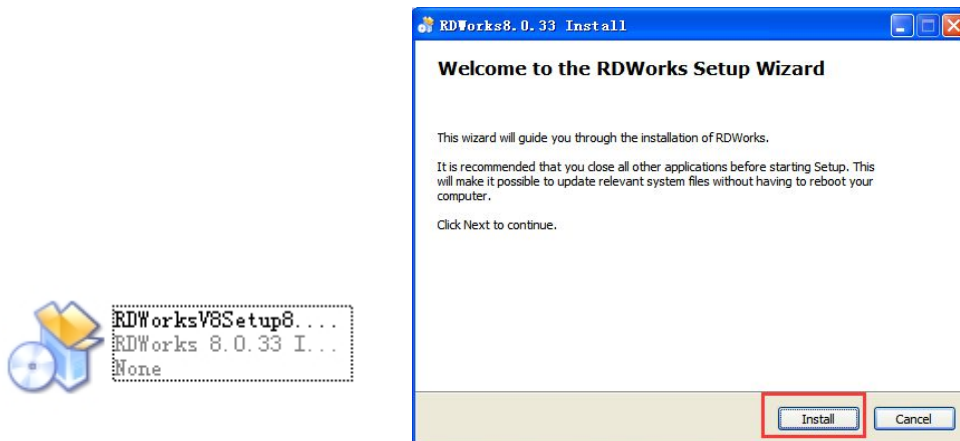
Before you install the software, please turn off all the Anti-virus software because the Anti-virus software will stop the laser machine software automatically.

Below is the install steps, please kindly follow it.

1. Decompression the software I sent you



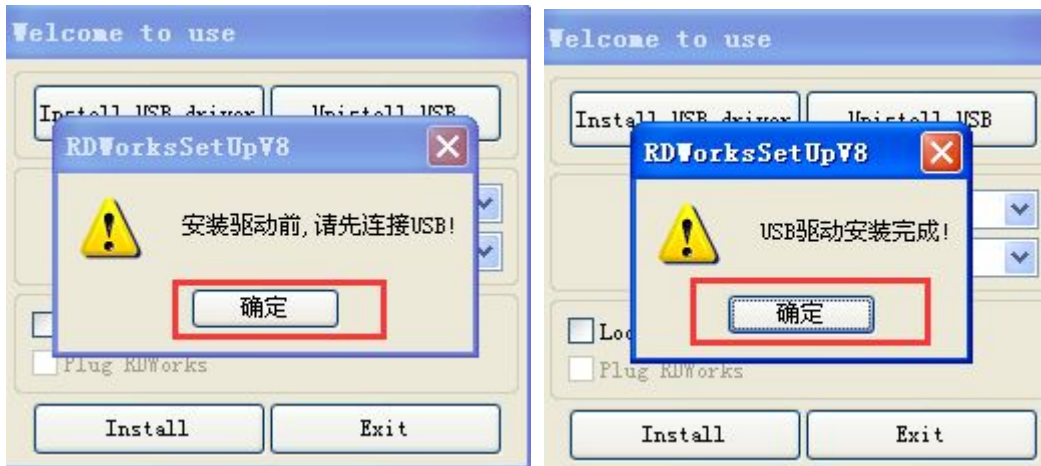
2. Open the software and install it.



3. Choose the English Language first, then install the USB driver



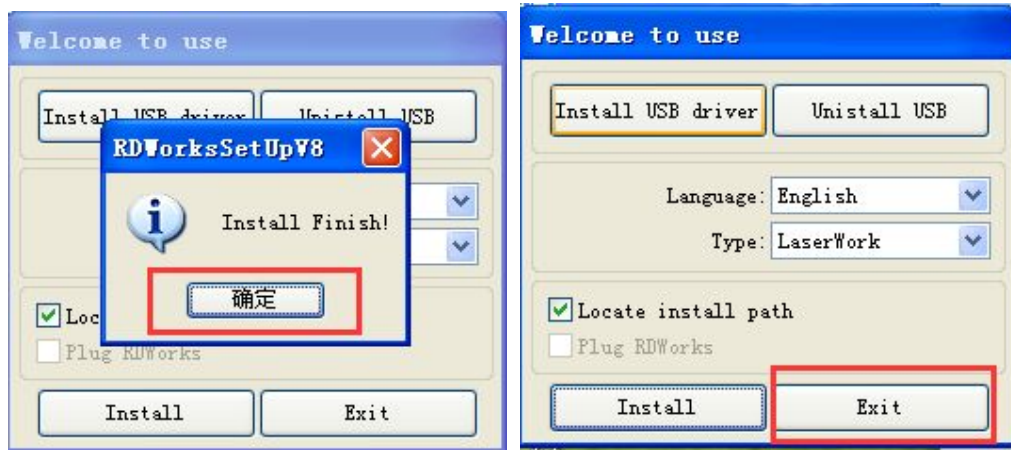
4. Click ok when install



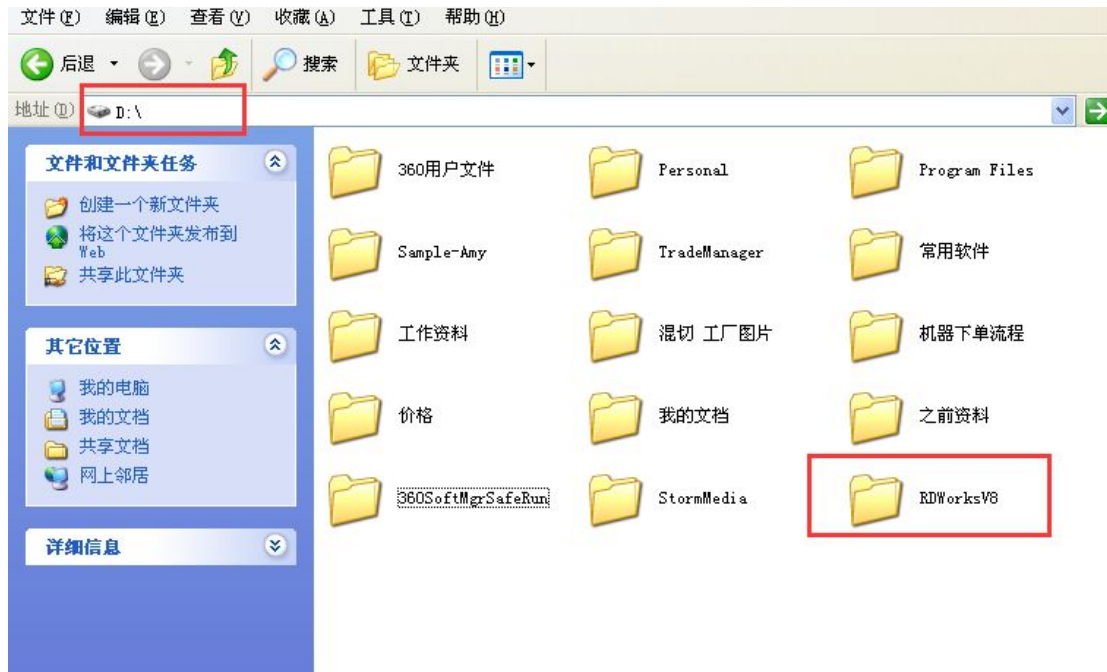
5. Choose install place and install (I install in my D disk, you could choose other place, it do not matter)

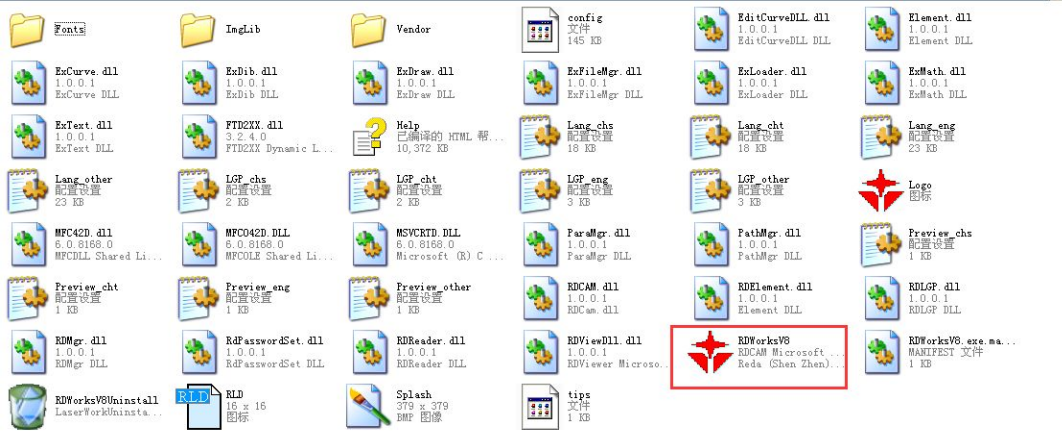


6. Click ok and then exit

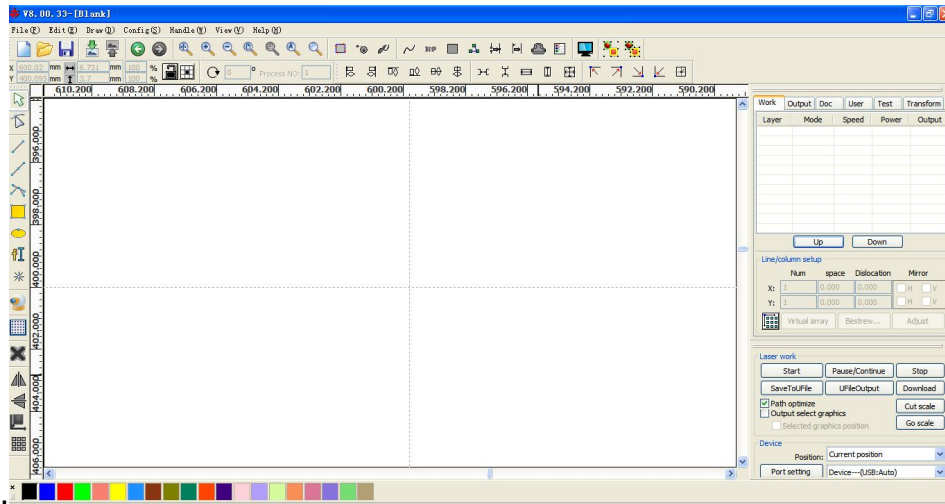


7. You could find it in the place you install (I install in D disk), open it, you could use.

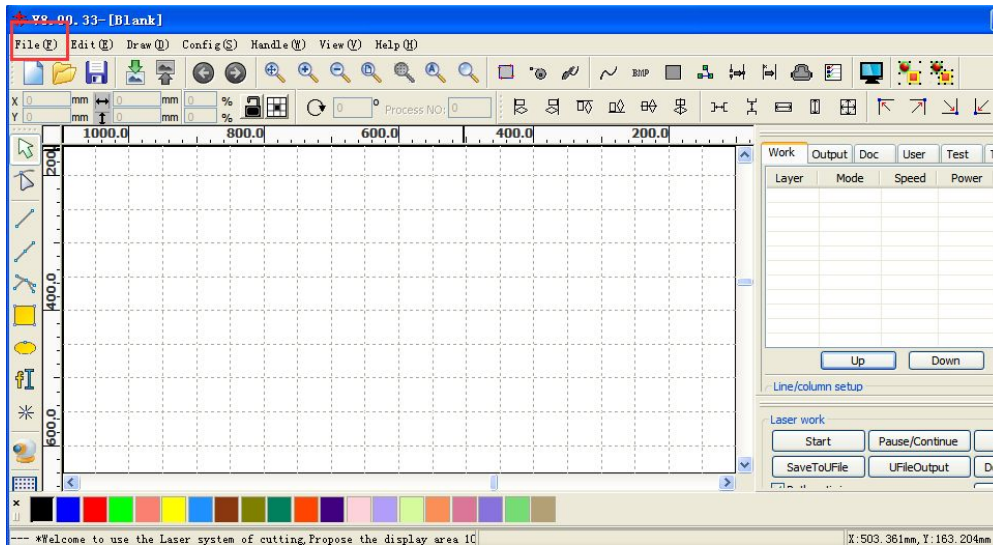




8. Open the software, you will get the interface as below

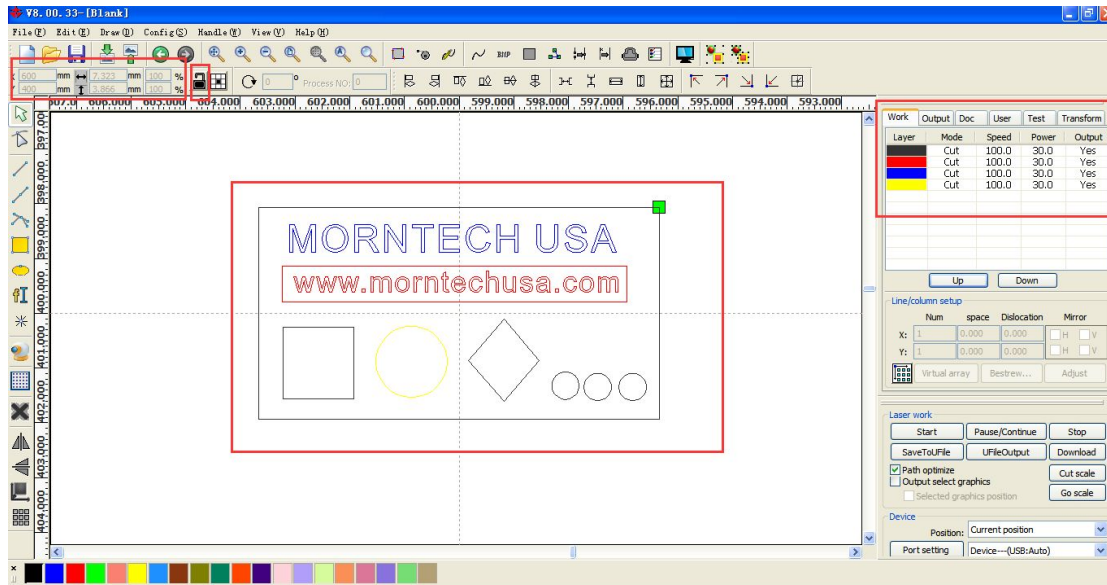


9. Click file and import one design you want to engrave or cut





10. Then you could set the parameters you want (speed, power, size, etc)



Note: when you operate, the lock has to be opened.

This software is so easy to use, after you get the machine, our engineer also could help you online to use it well.

If there is any questions, kindly let me know it

Best regards,

Sofia